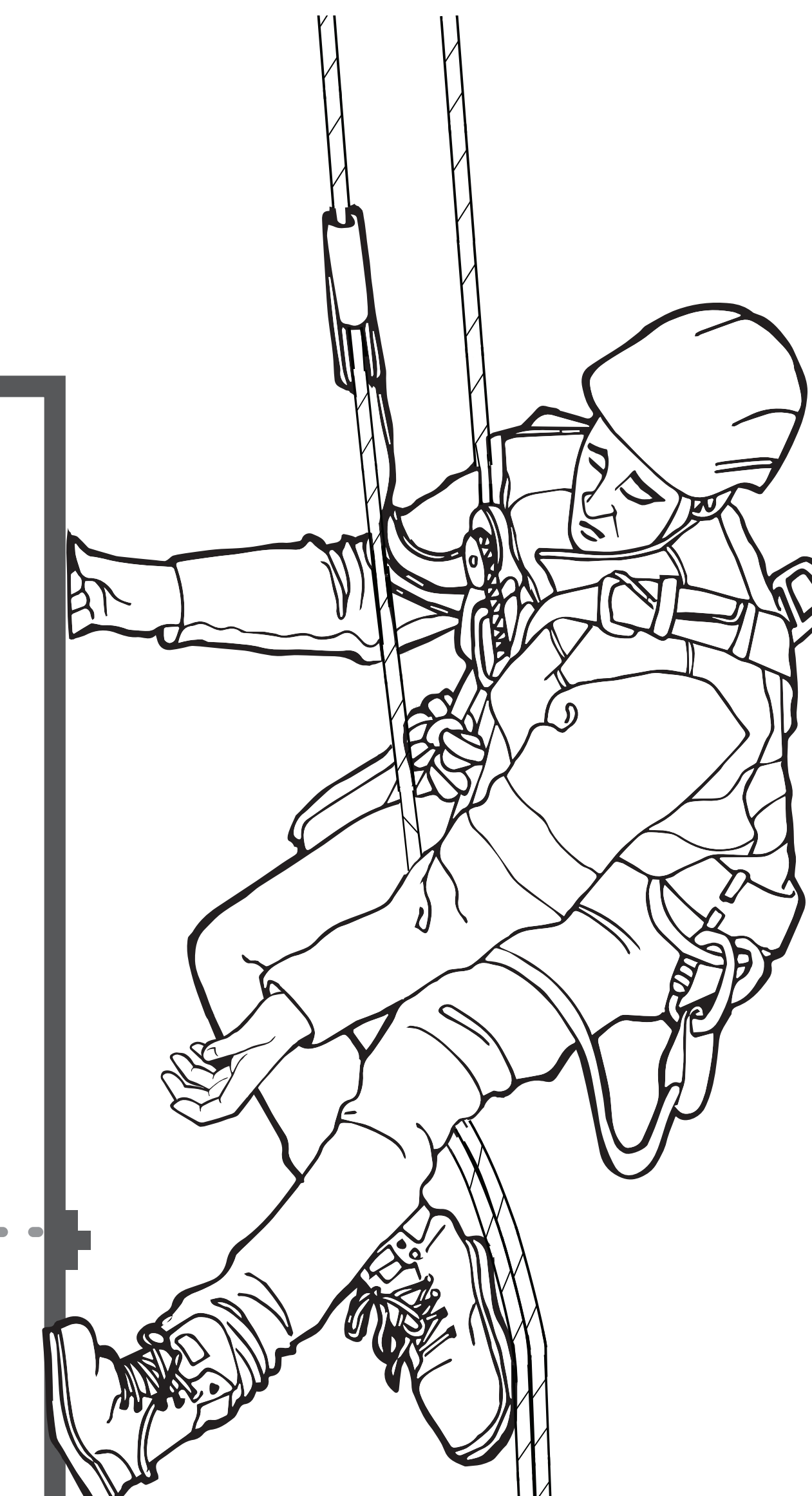
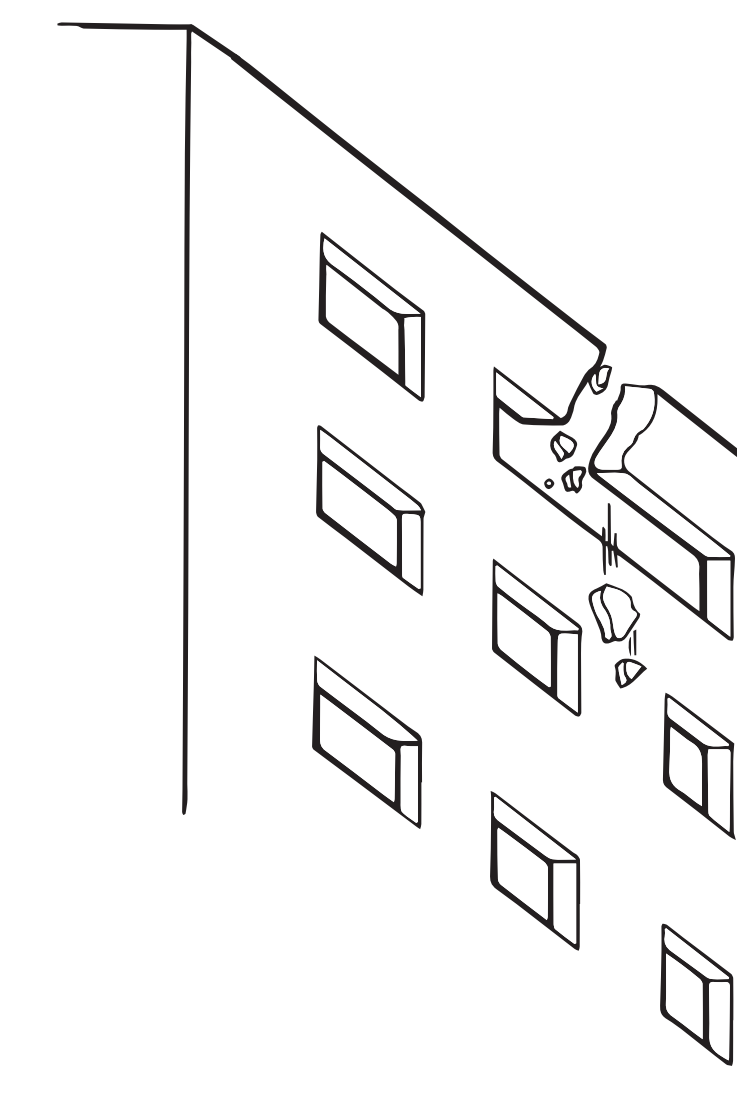
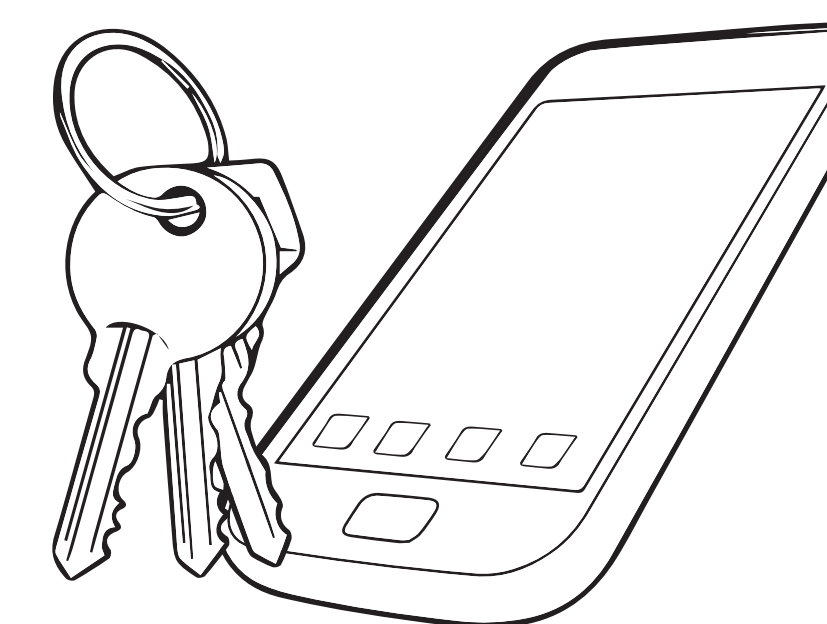
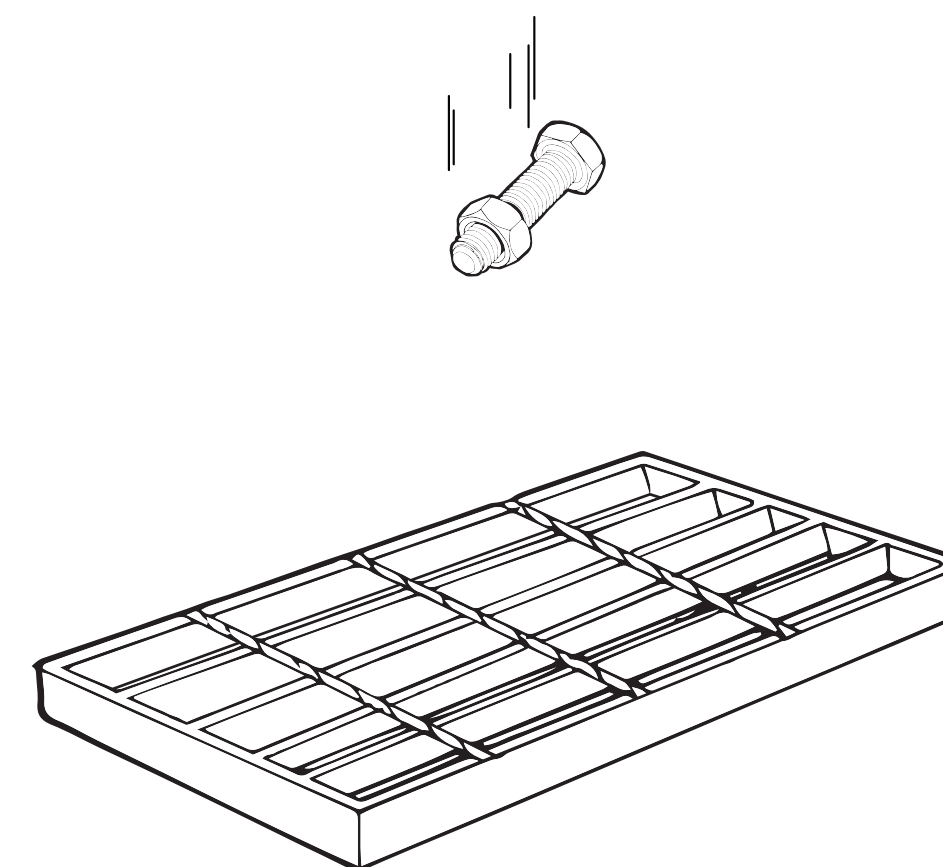
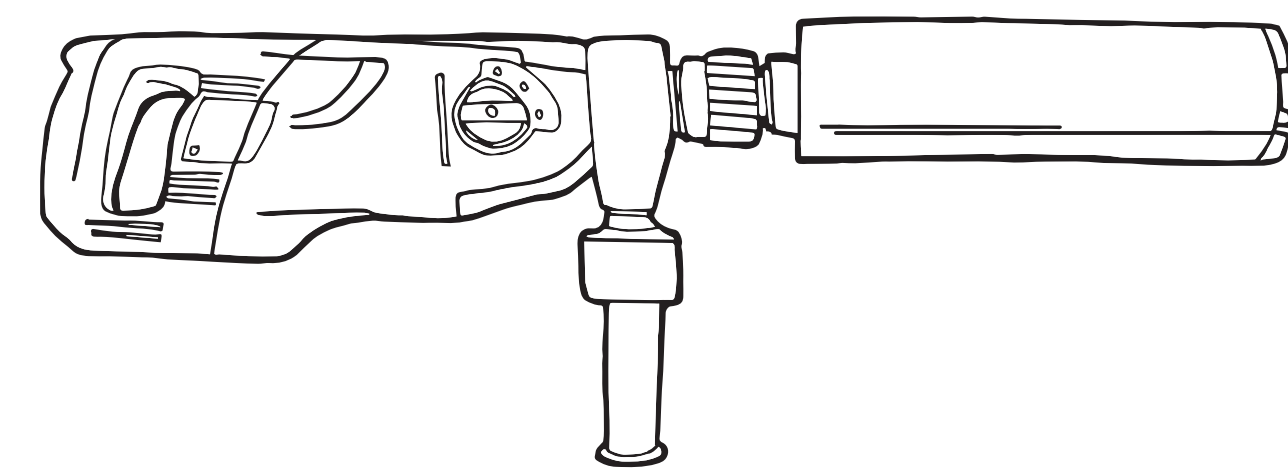
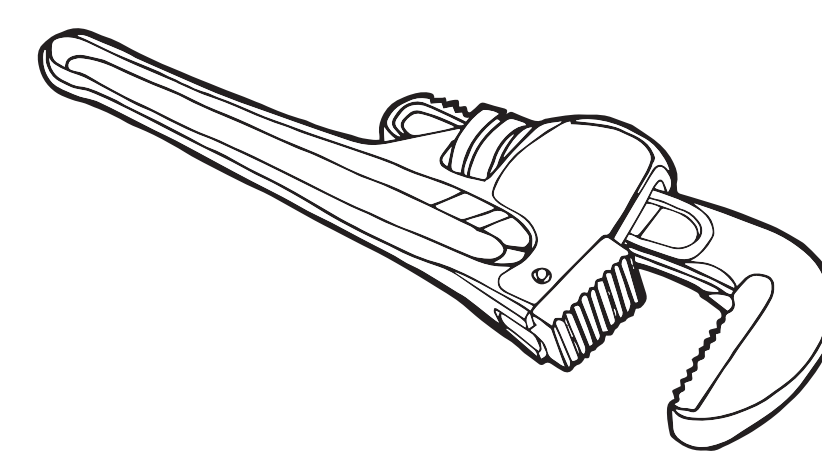


# 防止物品墜落

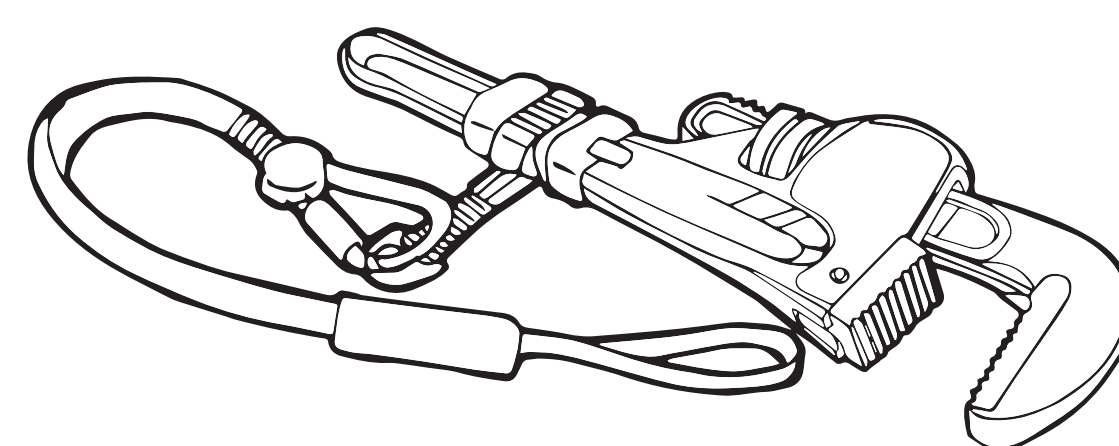
## 旁人的生命操縱在你手裡

辨別會掉落的工具和物品

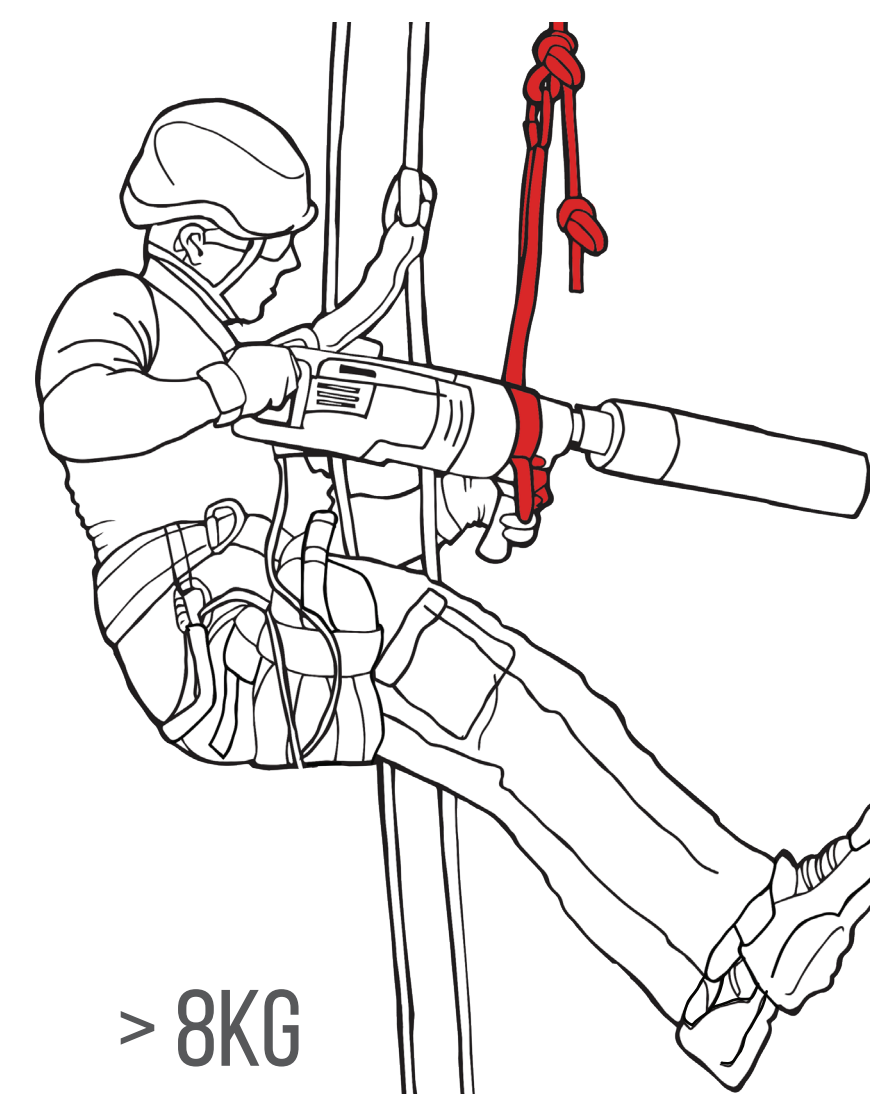
辨別&汰換 (允許的情況下)



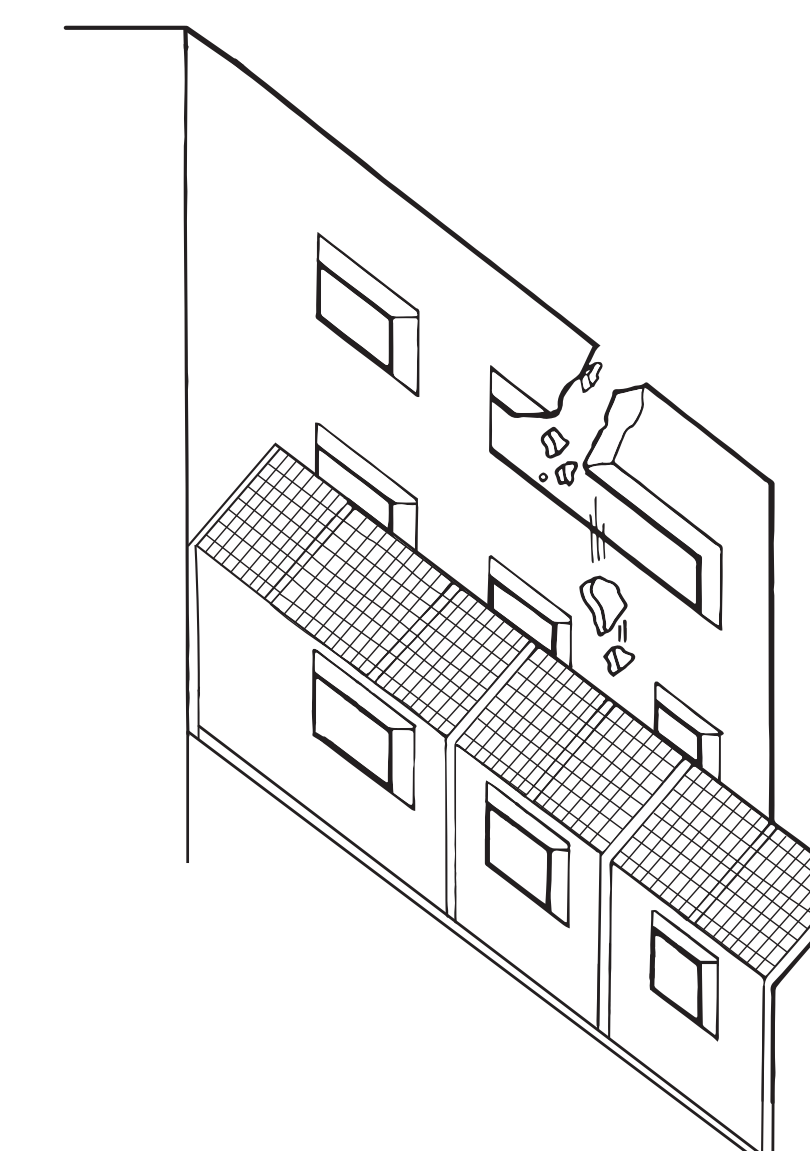
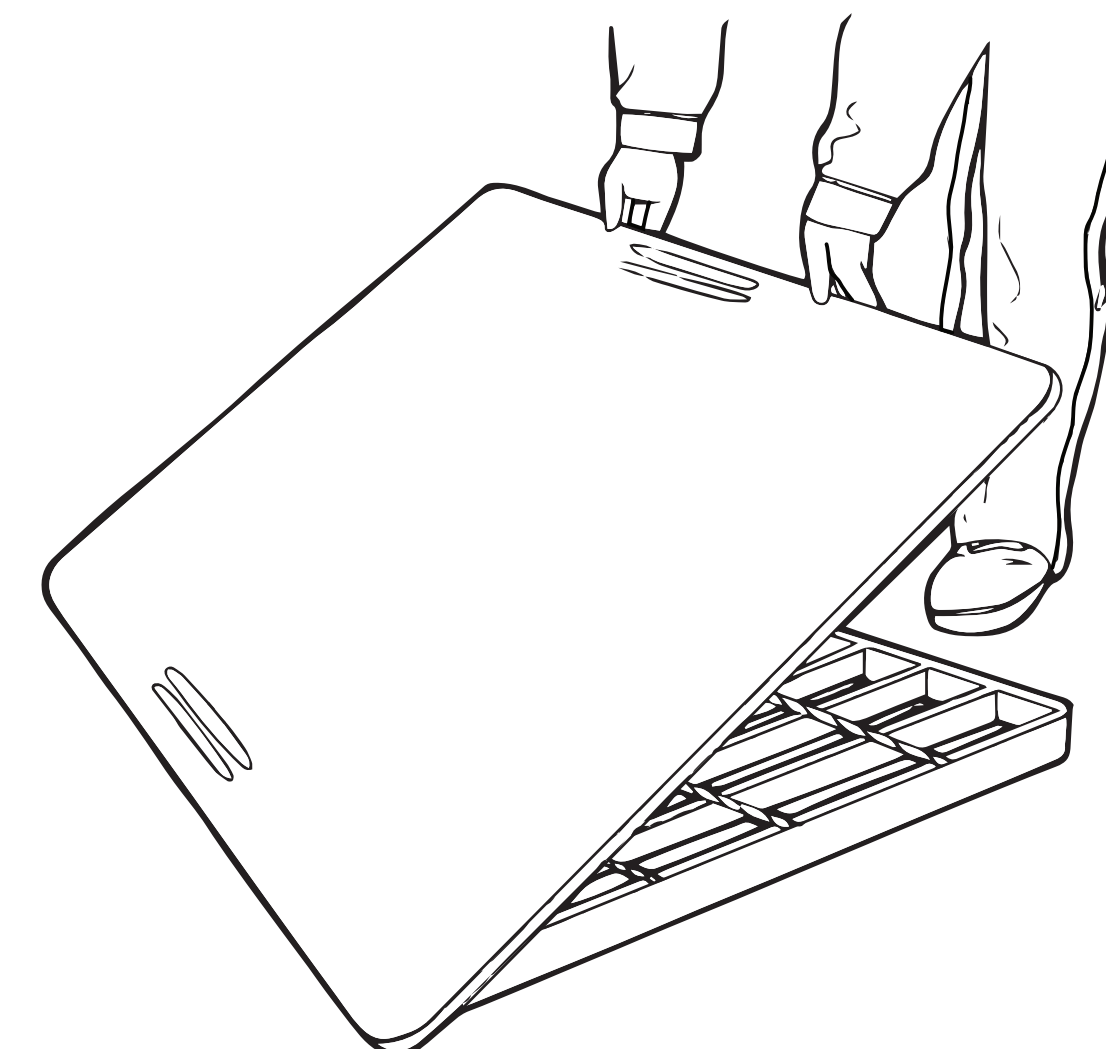
主要控管 (現場管控)



< 8KG

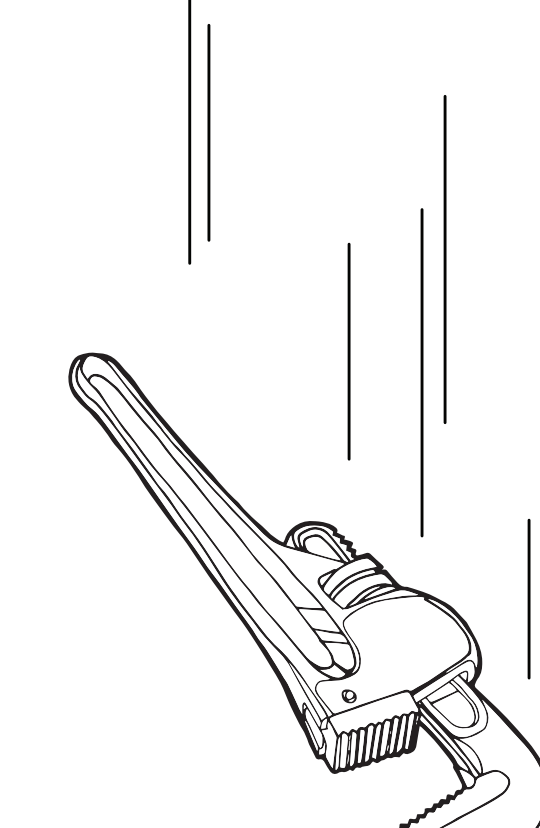
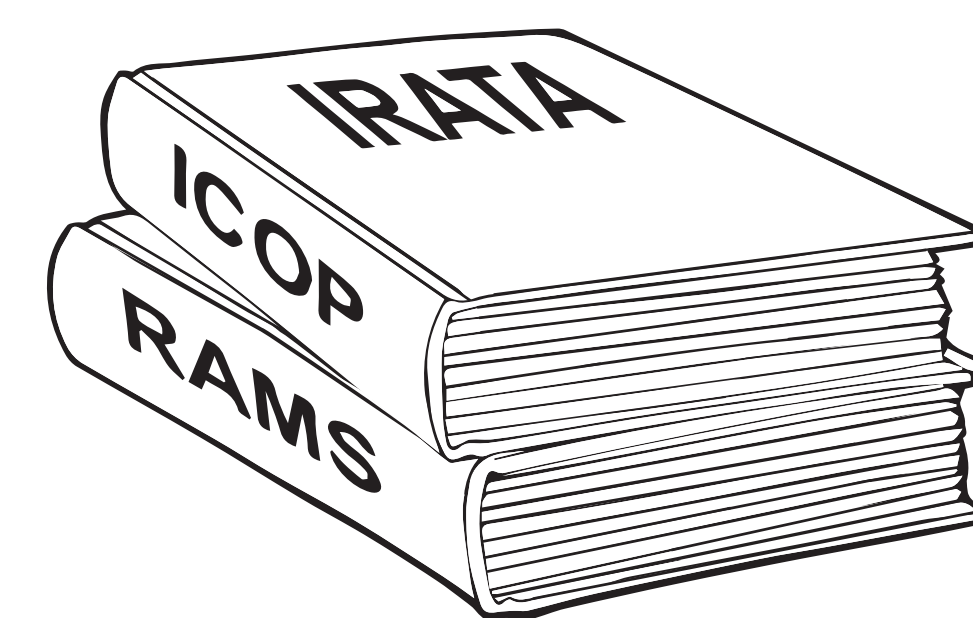
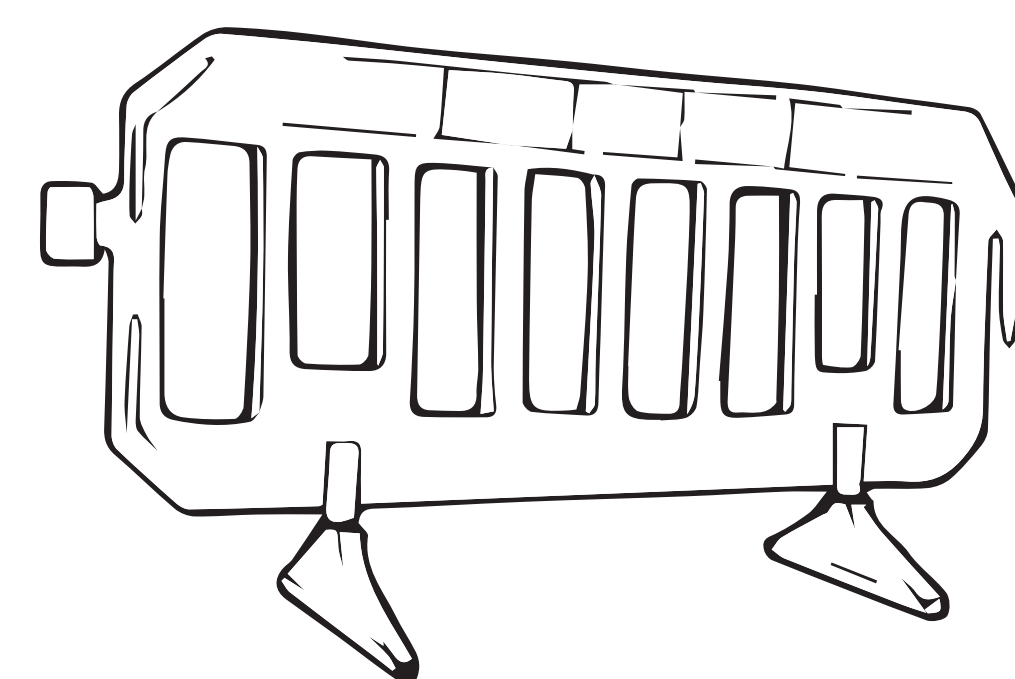


> 8KG



防護等級

額外控管 (事前規劃)



個人防護裝備 (PPE)



- 確認防護措施的等級是否適當且牢靠, 請勿在防護措施不確實的情況下施工。
- 參閱 **ICOP** 來了解致命傷害:
  - 1.4.2.6 和 2.11.8 - 施工隔離區
  - 2.2.3 - 工作前分析
  - 2.2.4 和 附件 A - 風險評估
  - 2.2.5 和 附件 B - 安全聲明
  - 附件 M - 工具與其他工作設備的使用

